

MONITOR

0656829111

info@monitor.ie

36.5° C



Temperature Screening Thermal Solutions

SAFER, FASTER, SMARTER

With advanced detectors and algorithms, Temperature Screening Thermal Cameras can detect elevated skin-surface temperatures in moving crowds such as passengers, commuters and shoppers, with accuracy up to $\pm 0.3^\circ\text{C}$.

Temperature-Screening Thermal Cameras

Temperature measurement range: 30-45°C
Working temperature: 10-35°C

Temperature Screening Solutions

- 1 Handheld Camera
- + Tripod
- + iVMS-4200 or Hik-Thermal (Mobile app)

Accuracy: $\pm 0.5^\circ\text{C}$



With a Wi-Fi module, the TP21B handheld camera can connect to a PC or a smartphone to notify operators when a person with an elevated temperature passes by. It also features a built-in speaker for audio alarms.

- 2 Turret/Bullet Camera
- + Tripod/Bracket
- + iVMS-4200
- + Laptop

Accuracy: $\pm 0.5^\circ\text{C}$



The turret/bullet camera features AI detection to reduce false alarms caused by other heat sources.

- 3 Turret/Bullet Camera + Blackbody Calibrator
- + Tripod/Bracket
- + iVMS-4200
- + Laptop

Accuracy: $\pm 0.3^\circ\text{C}$



Compared with Solution (2), Solution (3) is enhanced with a blackbody calibrator to increase the temperature measurement accuracy from $\pm 0.5^\circ\text{C}$ to $\pm 0.3^\circ\text{C}$.

- 4 Metal Detector Door with Thermal Turret
- + iVMS-4200
- + Laptop

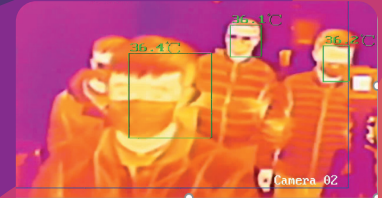
Accuracy: $\pm 0.5^\circ\text{C}$ without blackbody
Accuracy: $\pm 0.3^\circ\text{C}$ with blackbody



PRE-ORDER NOW

With a thermal turret included, the temperature screening metal detector door solution offers LCD temperature indicator and real-time sound and light alarms.

Note: this door solution includes the thermal turret.
No need to order separate thermal camera.



AI Detection
384*288 thermal resolution
15 mm thermal lens
(Recommended camera-target distance: 4.5-9 m)
6 mm optical lens



AI Detection
160*120 thermal resolution
3 / 6 mm thermal lens
(Recommended camera-target distance: 0.8-1.5 m / 1.5-3.0 m)
4 / 6 mm optical lens



AI Detection
160*120 thermal resolution
3 / 6 mm thermal lens
(Recommended camera-target distance: 0.8-1.5 m / 1.5-3.0 m)
4 / 6 mm optical lens



Wi-Fi
160*120 thermal resolution
Max 8 MP optical resolution
6 mm thermal lens
(Recommended camera-target distance: 1.5-3.0 m)